

## Itinerary

**DAY 1** We depart at 9.00am. There are 2 routes to Torquay but which route will be decided, with the coach driver, on the morning. We will however, have an interesting stop of at least 2 hours on either route.

**Day 2** Today we head out to the wild and rugged Dartmoor. We start with a stop in Buckfastleigh for you to look around. Then onto somewhere very unusual for a short visit but more on the day. Finally, no visit to Devon would be complete without a Devonshire Clotted Cream Tea. We head to the middle of Dartmoor for a traditional, locally produced, Devonshire Clotted Cream tea.

**Day 3** Today we have FREE TIME to explore Torquay seafront and the town. The tour buses start from the harbour centre, less than 5 minutes walk from our hotel. As an alternative, our coach will run to the near by Fishing Port of Brixham where you will have about 2 hours before returning to the hotel.

**Day 4** Today we take a Steam Train to Kingswear and after taking the ferry across the River Dart we board a boat for a River Dart cruise for 1 hour. After this you will then have free time in Dartmouth before we board the Steam Train back to our Hotel.

**Day 5** Sadly, it's time for us to go home but on the way back we will stop at a place of interest. We aim to be back at Ardleigh House by 5pm.

## Our Accommodation

All rooms have En-suite facilities.....Freeview TV  
Hospitality tray.....Complimentary Wi-fi

**Prices are TOTAL Cost of Holiday**

**There are NO single rooms**

**Cosy Double walk-in shower.(1 person).....£650.00**

**Standard Double bedroom....(1 person). ...£650.00**

**Standard Double bedroom....(2 people)..£1,200.00**

**Standard Double sea view....(2 people)...£1,240.00**

**Deluxe Double Sea View .....(2 people)...£1,320.00**

**King Deluxe Double Sea view(2 people)..£1,360.00**

**All rooms can be viewed on our website**

**Above prices include return coach, Dinner, Bed & Breakfast, coach trips out**

**A non refundable deposit of £50.00per person is required when booking. The balance is due by Monday 24 August 2026, (6 weeks before the holiday). Cheques payable to Ardleigh House please.**

**We strongly advise you to take out holiday insurance.**

**TO BOOK THIS HOLIDAY** Please complete the online booking form at [www.ardleighhouse.org](http://www.ardleighhouse.org). Until the £50.00 per person non-refundable deposit is paid **your booking cannot be confirmed**

# The Imperial Hotel Torquay

## 5 Day Escorted Holiday to Torquay

**5 October 2026**

**to**

**9 October 2026**

## 4\* Imperial Hotel

This is almost certainly one of the best hotels in Torquay. The Imperial Hotel is a historic, luxury hotel with a stunning seafront location and very close to Torquay Harbour. The Imperial Hotel is a grand Victorian building, originally dating back to the 19th century, and it's known for its timeless elegance and classic décor. The hotel boasts beautifully appointed rooms, each blending modern comforts with historic charm. For a small supplement you can enjoy a room offering breathtaking sea views or a Deluxe room with your own balcony or, if you prefer, views of the hotel's lush gardens.

The hotel's public spaces are equally impressive, with most public rooms having magnificent views across Torbay. There is a lovely terrace for alfresco dining. Guests can enjoy spa facilities, a heated indoor pool, and a well-equipped fitness centre. The hotel also offers easy access to local attractions, beautiful gardens, and a warm, welcoming atmosphere that makes it a perfect spot for both relaxation and exploration. The hotel also has a rich history, often hosting notable guests and events over the years. It's a perfect blend of old-world sophistication and modern hospitality.

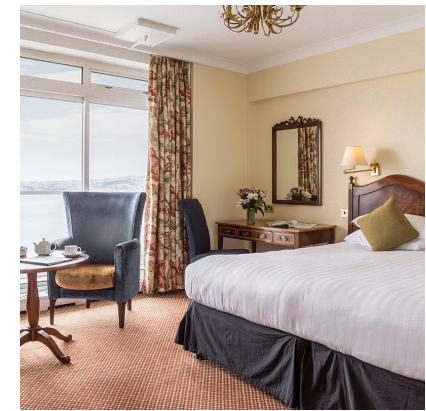
**PLEASE NOTE: Due to the hotels elevated position there is a short but steep hill to climb from the Harbour.**

Ardleigh House Community Association

42 Ardleigh Green Road, Hornchurch RM11 2LG



Magnificent marble reception area



King Deluxe Double with seaview & balcony



The Restaurant with views across Torbay



Indoor swimming pool



A Standard double with inland view



Lounge/Bar area